

SUPPORT BOAT BRIEFING 2018

INFORMATION FOR SUPPORT BOAT/ OFFICIAL BOAT DRIVERS

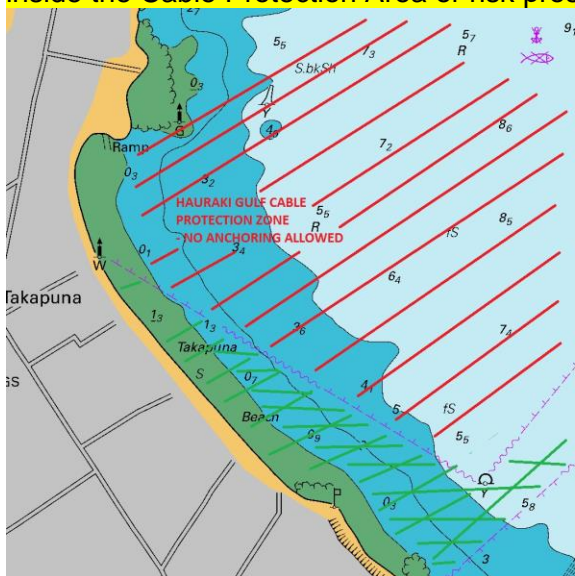
Welcome to the 2018 Takapuna Beach Cup (TBC), NZ's premier long distance outrigger canoe race. The main event is a change race over a distance of 42km. For those unfamiliar with Outrigger Canoe ultra marathon racing, a team is made up of either 9 men, 10 women or a mixed crew of 5 men and 5 women with any 6 of them continuously in the canoe (in the mixed open category 3 women must be in the canoe at all times). The support boat driver's role is to carry the 3 or 4 other paddlers that will continually take turns at rotating in and out of the canoe as they race over the 42km course.

If you have been allocated a team by the TBC organising committee, you should now have the contact details of your team. Please make contact with them prior to Saturday to make arrangements for race day. If your support boat has been arranged by the TBC organising committee, payment will be made to you by us, not your crew. If you are designated as an official or safety boat you must be familiar with all of these instructions, in the event that you are called upon to support a team during the race.

Every boat must carry an observer (this person is not the driver and may not be a competing paddler, it may be the team captain). All support boats must meet the requirements set out below and all support boat skippers must sign a liability waiver and briefing acknowledgement register on race day. Both documents will be sent to you prior to race day.

If you need assistance at the ramp to launch and retrieve your boat on the day, please ask your crew to meet you at the ramp. There will also be some helpers in Hi Viz jackets at the ramp on the day. In an easterly wind the Takapuna ramp may be unworkable. The alternate ramp is Bayswater marina.

Anchoring is only permitted at Takapuna Beach within a line from the cable triangle at the southern end of The Strand to yellow cable buoy off the south end of Takapuna Beach. Support boats cannot anchor inside the Cable Protection Area or risk prosecution by Maritime NZ.



Do not anchor outside the permitted area or you risk prosecution by Maritime NZ who monitor that stretch of water by camera. **Note; this is a change to anchoring arrangements in previous years.** In adverse weather conditions support boats may need to be loaded with crews at Castor Bay. This will be advised prior to the day.

Keep your cell phone handy for updates from the organisers and contact with your crew.

There will be sprint racing at the Takapuna Boating Club (Takapuna Beach Reserve) on Friday the 16th from 12pm to about 4:30pm. Feel free to drop in and find out about Saturday's race course, meet the competitors and ask any questions you have. Otherwise visit our website for more race information www.takapunabeachcup.com

On Saturday 17th your boat must be in the Support Boat (Permitted Anchoring Zone mentioned above) by **08:00 am**. It is important to be on time, to allow your team to load up. Support boat skippers must visit the support boat tent (Tent on the beach next to the ramp coming down from the clubrooms) Note: Due to high tide there will be limited beach space available. At the tent you need to sign the waiver and confirm that you have read and understood this support boat briefing. **UNLESS ALL PAPER WORK IS RETURNED BY THURSDAY. YOU CAN THEN CALL/TEXT GLENN TO CONFIRM VIA PHONE ON THE DAY** if you are texting to say you are onsite, you need to ensure you state your boat name and the crew number you are supporting.. Visit the support boat tent any time from 7.30am to 8:30am to do so. First race start for Women's and mixed crews is 9.30am followed by all Men's crews at approx. 9.45am. These times are subject to change as we have to work with the Ports of Auckland for boat departures. As soon as the race briefing for competitors is over (8:30am), load up your crew and move immediately across the channel to the first changeover point. Ladies and mixed crews this is red channel marker No.6 in the Rangitoto channel. Men's crews, big orange buoy south/southwest of channel marker No. 6.

Make sure you are not in the way of crews starting, you must be totally clear of the start area.

Please read the requirements below and contact me, the Support Boat Manager, Glenn Whiting on 027-5345244 should you have any queries.

SUPPORT BOAT REQUIREMENTS

Support Craft Criteria: The following criteria are in compliance with the rules set by the Takapuna Beach Cup organisers and must be followed.

- Tin or inflatable dinghies are not suitable support vessels
- Vessel must be a minimum of 5m in length
- Vessels must be seaworthy and have a minimum carrying capacity of 5 people and must be able to safely carry all team paddlers and support boat crewmembers.
- Vessels must be fully fuelled and mechanically sound
- Vessels must be equipped with all safety gear, including personal flotation devices for ALL passengers (including all paddlers), a first aid kit, bailing equipment, flares, mirror, VHF Radio, boarding ladder and oars.
- All Operators must be aware of and comply with all applicable Water Safety Regulations and Requirements
- All Operators must be aware of and comply with all of the Events Official Race Rules.
- All Support Boats must have a competent operator
- All Support Boats must have a non-paddling observer

- All skippers to collect information Lanyard from boat briefing tent on beach and need to carry an alternate to VHF – eg mobile phone.

MARITIME NZ – Will conduct random safety inspection on support craft before the race.

The appropriate race channel for communication is noted below and it is the responsibility of boat operators to monitor that channel throughout the race. Random Radio checks will be made at the beginning of the race.

Please Note The support boat driver has final say over the commandeering of his/her vessel

Racing

Support boats are to proceed to the first change over point 15 minutes before race start (Race start 9:30am) and wait on the South West side of the designated “change” buoy

Further changes will be at the discretion of the teams (at approximate intervals of 10 minutes).

All changeovers must be made from the water (i.e. No support boat within 20m of any canoe except during capsizes).

Towing of a canoe in the direction of the finish line will result in disqualification of that team.

Any impedance of a canoe by any means (eg. Wash or intentionally causing of canoe to alter course) will result in either a time penalty or disqualification being applied to the support boat's team at the discretion of the Race Director.

Race Officials have the power to act and disqualify any crew whose actions, be it in their canoe or support craft, do not regard the safety of their own members or other competing crews

How to execute a safe and effective crew change:

The crew manager will ask the support boat captain to do a crew change NOTE: no crew changes to be made in the main marked shipping channels.

Carefully move up alongside the canoe for the crew manager to call out the paddlers who will change.

Without creating unnecessary wash for any craft on the water, move ahead approximately 250m to a point directly on the path of the canoe heading (and clear of other paddlers and boats)

Drop the paddlers into the water and wait off to the side. The fresh paddlers will jump into the approaching canoe and replace the tired paddlers who jump into the water.

When it is safe to do so, approach the paddlers in the water keeping them in full view at all times. **Turn off the engine**, throw out the rope with float, drop the boarding ladder. Do not attempt to manoeuvre the boat until all of your paddlers are safely on board.

Support Boats must TURN OFF THE ENGINE when paddlers are in the water !!!

Canoes in the process of changing have right of way. If there are canoes and boats approaching during this stage of a change, they can and must steer around your boat.

When it is safe to do so, move off and shadow your canoe again (close enough for them to signal you if they need to) until the next change is requested.

Safety

With so many boats, canoes and paddlers in the water, safety is paramount. Please observe all of these safety instructions throughout the race

- Safety of all passengers and paddlers entering and leaving your boat is your responsibility.
- Do not hand over the controls of your boat to any member of the racing crew, or anyone who is unqualified to handle your vessel and observe these safety standards, unless there is an emergency.
- Establish a procedure to confirm all paddlers are on board and safe before starting the engine after every change (e.g. have the observer call out, "all aboard-safe to start"). Follow this routine every time.
- Never reverse up to paddlers in the water.
- Switch motor off (not just into neutral) when paddlers are entering or leaving the boat.
- Approach paddlers in the water from the driver's side, so they remain in view.
- Have a rope with float attached on the end to throw to the paddlers, this helps them get on board easily and prevents you drifting away from them.
- Call on VHF channel (Channel 27) for assistance from a safety boat or race control. Backup is SHORE BASED RADIO OPERATOR TBC. Use the maritime emergency channel 16 only in the event of a real emergency.
- Include a thermal/foil blanket (cost ~\$10) in your first aid kit. If there is an injury or incident a paddler can quickly get cold.
- Support boats must not impede any other team, or assist their own by wash riding etc.
- Observe 5 knot speed rule around swimmers and boats (this includes racing canoes)
- Ensure safety is paramount for all on board, this includes not consuming any alcohol while involved with this event.

Weather

If the weather on the day or the forecasted weather conditions look likely to make the course unsafe, there are alternate course's that can be used. If in doubt about conditions, contact the Race Director. Do not decide to cancel your support without contacting your crew and the race director Lara Collins 0275 484612 or myself on +64 27 5345244.

Alternately you may go to the Takapuna Beach Cup web site which will keep you up to date with what is happening www.TakapunaBeachCup.com

Thank you again for your support, this race is only possible because of your willingness to participate; I hope you enjoy the race.

Take care

Glenn Whiting - Support Boat Manager